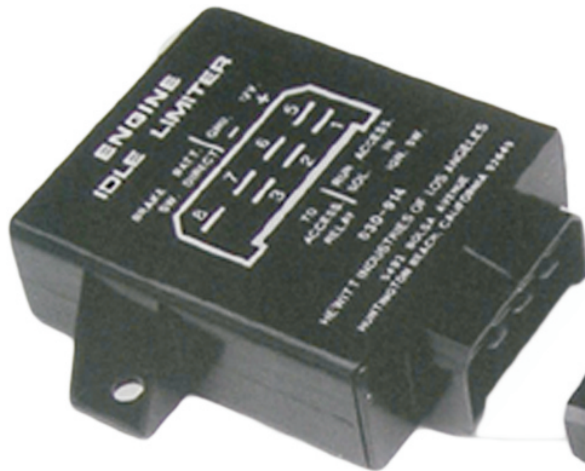




HEWITT INDUSTRIES

ENGINE IDLE LIMITER WITH TEMPERATURE CONTROL

“ENGINES DON'T IDLE FOR FREE”



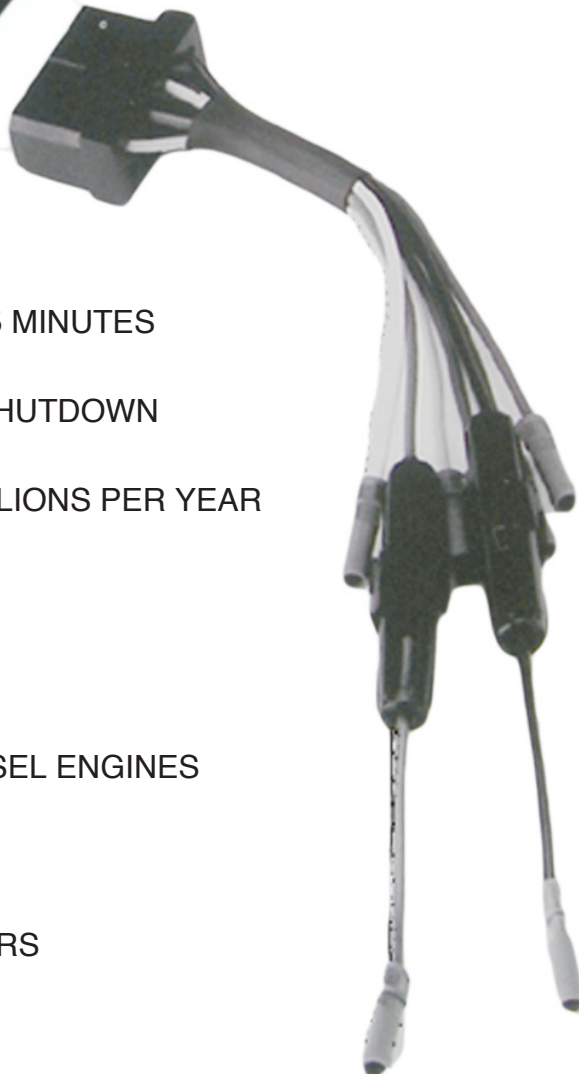
MODELS

P/N: 030-914 No Temperature Control

P/N: 030-917 With Temperature Control

FEATURES:

- LIMITS ENGINE IDLE TIME TO 5 MINUTES
- ENGINE AND ACCESSORIES SHUTDOWN
- REDUCES RPM COUNT BY MILLIONS PER YEAR
- EXTENDS ENGINE LIFE
- STOPS FUEL WASTE
- APPLICABLE TO GAS AND DIESEL ENGINES
- LOW COST EASY TO INSTALL
- WARRANTED FOR THREE YEARS
- NO LIMIT TO USEFUL LIFE



ENGINE IDLE LIMITER WIRING DIAGRAM

The "Engine Idle Limiter" is designed to shutdown the engine and any connected accessories five (5) minutes after the vehicle or trailer brakes have been applied. Flexibility of the Hewitt "Engine Idle Limiter" design allows various application combinations to minimize unnecessary engine idling. For engine shutdown only, just four wire

connections are required. Brown wire, Black wire, White wire and Yellow wire. If accessory disconnect is also required, Green wire, Red wire and Blue wire must also be connected per diagram. All wires connected to the ignition switch accessories terminal and any accessory relays, must be connected to the Blue wire.

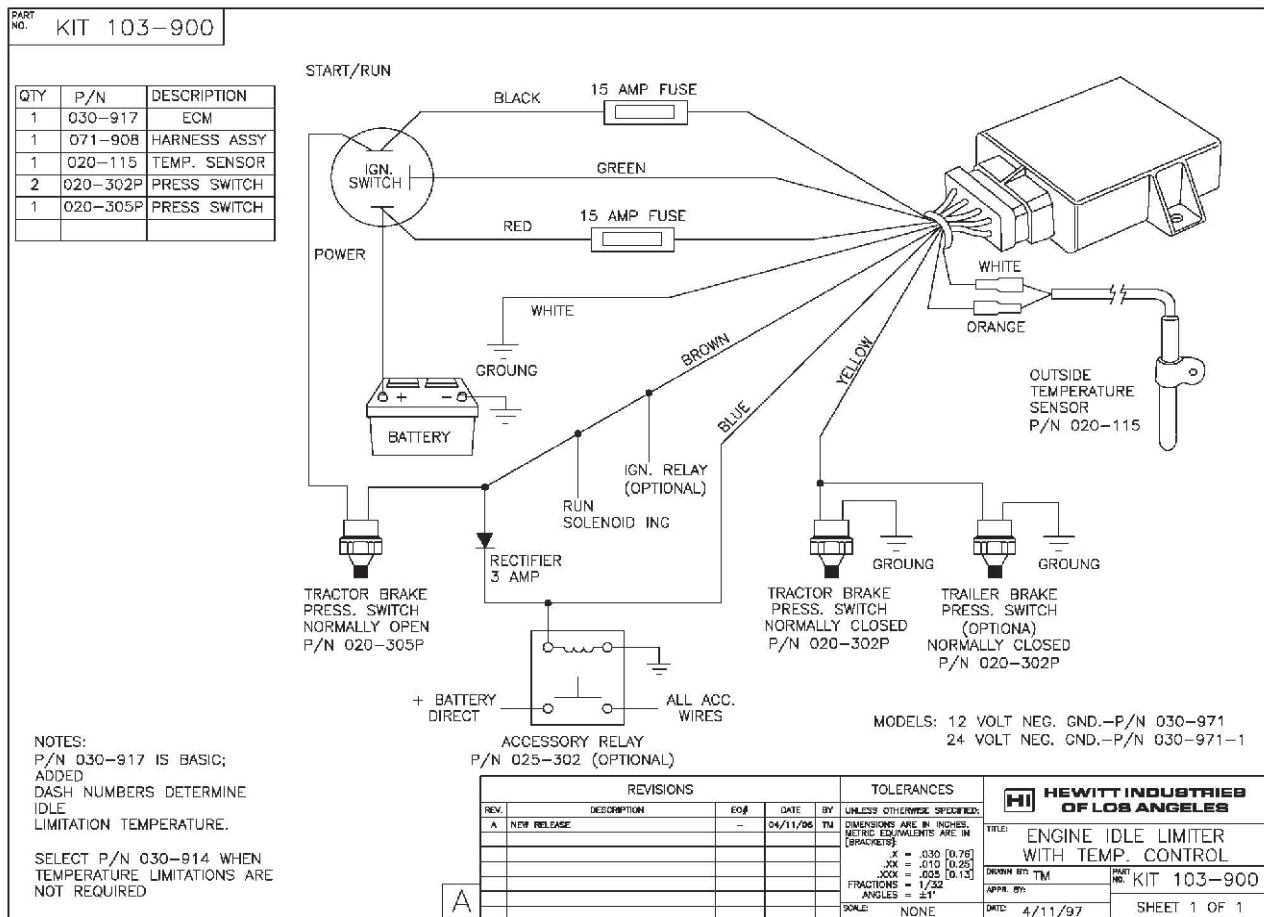
P/N 030-917 includes an outside air temperature sensor that disallows engine shutdown when outside air temperatures are below 52/55 F., or above 77/80 F. for driver comfort. If the sensor is disconnected, the system functions the same as P/N 030-914. Different temperature ranges are available upon request.

MODEL: P/N: 030-914 (12V) No Temperature Control.

P/N: 030-914-1 (24V) No Temperature Control.

P/N: 030-917 (12V) With Temperature Control.

P/N: 030-917-1 (24V) With Temperature Control.



CALL MURCAL TO PLACE YOUR ORDER

P:(661)272-4700 F:(661)947-7570

www.murcal.com

e-mail: sales@murcal.com

