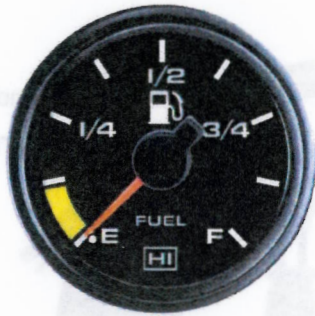


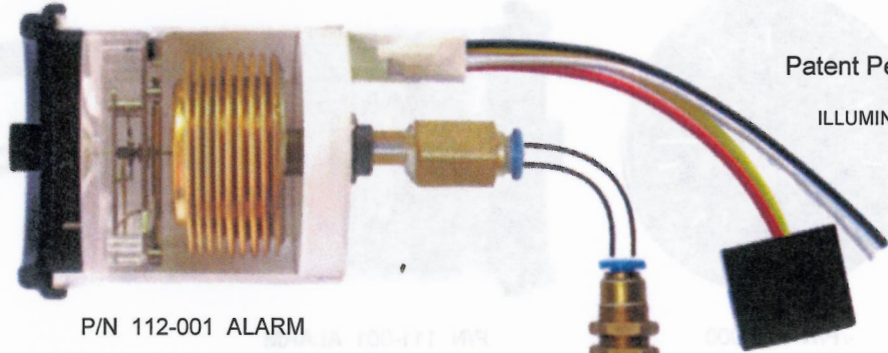
**FUEL LEVEL**

**EXPLOSION PROOF**

**NON - ELECTRIC**



P/N 112-000



P/N 112-001 ALARM

Patent Pending

ILLUMINATION

TRUCK • BUSES • MARINE • INDUSTRIAL • AIRCRAFT

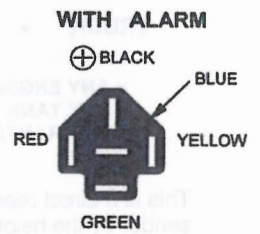
- ANY ENGINE
- ANY TANK SIZE
- WARRANTED FOR 3 YEARS
- EASY TO INSTALL
- ANY SUMP SIZE
- L.E.D. ILLUMINATION
- ACCURACY - FULL SCALE ± 1%
- NO LIMIT USEFUL LIFE

This is a direct reading instrument, driven by the column pressure generated in the sender by the height of the liquid. The pressure is transferred to the gauge through a 4mm tube. This results in a full scale accuracy of ± 1%. The unit can be installed in instrument or remotely mounted.

The 4mm tube, which will tolerate -79° to 400° F, is similar to the brake lines used on heavy duty trucks and buses. It can be extended in excess of 100 ft. Connections are made utilizing push in fittings that utilize an "O" ring seal. This connection must be lubricated with the supplied lubricant to assure a proper seal. Fitting are proprietary.

Tank depth require. Available with or without alarm. Specify adapter requirement.

Equipped with: Firewall fitting and 9 ft. of 4mm tube.



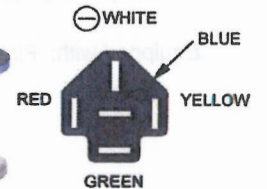
- ⊕ BLACK
- ⊕ POSITIVE
- NO ALARM  
BLUE IS OPEN
- ⊕ GREEN IS POSITIVE
- ALARM  
BLUE IS POSITIVE  
GREEN IS OPEN

ANY ADAPTER

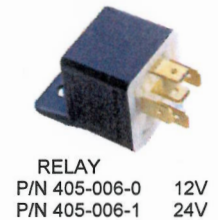
**PURGE PUMP**  
P/N 118-000



Purge Pump is necessary when the liquid level sender is inaccessible.



- ⊖ WHITE
- ⊖ NEGATIVE
- NO ALARM  
BLUE IS OPEN  
GREEN IS NEGATIVE
- ⊖ BLUE IS NEGATIVE  
GREEN IS OPEN



CALL MURCAL TO PLACE YOUR ORDER

P:(661)272-4700 F:(661)947-7570

www.murcal.com

e-mail: sales@murcal.com

